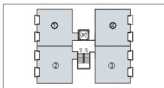


2 BEDROOM UNIT

| TOWER NO. | UNIT NO. | AREA (SQ.FT) |
|-----------|----------|------------------|
| A | 101-501 | 923 |
| | 102-502 | |
| | 103-603 | 895 |
| | 104-604 | |
| | 601 | 923+669(TERRACE) |

In the interest of maintaining high standards all floor plans, areas dimension and specifications are indicative and are subject to change as decided by the company or by any competent authority.



KEY PLAN



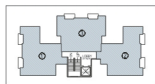
TYPICAL FLOOR PLANS



2 BEDROOM UNIT

| TOWER NO. | UNIT NO. | AREA (SQ.FT) |
|-----------|----------|------------------|
| B | 101-501 | 963 |
| | 102-502 | 965 |
| | 103-503 | 971 |
| | 601&602 | 963+362(TERRACE) |

In the interest of maintaining high standards all floor plans, areas dimension and specifications are indicative and are subject to change as decided by the company or by any competent authority.



KEY PLAN

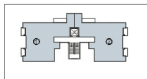
Not to scale

1 Sq. M. = 10.764 Sq. Ft.

3 BEDROOM UNIT

| TOWER NO. | UNIT NO. | AREA (SQ.FT) |
|------------|----------------------------------|--------------|
| C1, C2, C3 | 101-501(3BR) | 1335 |
| | 102-502(3BR) | |
| | 601-602(2BR) 1348+216(TERRACE) | |

In the interest of maintaining high standards all floor plans areas dimension and specifications are indicative and are subject to change as decided by the company or by any competent authority.



KEY PLAN



TYPICAL FLOOR PLANS



3 & 2 BEDROOM UNIT

| TOWER NO. | UNIT NO. | AREA (SQ.FT) |
|-----------|--------------|-------------------|
| D | 101-501(2BR) | 894 |
| | 102-502(2BR) | 938 |
| | 103-503(3BR) | 1233 |
| | 602(2BR) | 938+324(TERRACE) |
| | 603(3BR) | 1233+324(TERRACE) |

In the interest of maintaining high standards all floor plans areas dimension and specifications are indicative and are subject to change as decided by the company or by any competent authority.



KEY PLAN

Not to scale

1 Sq. M. = 10.764 Sq. Ft.